

REPLACEMENT PARTS

Ref. No.	Part No.	Description	Ref. No.	Part No.	Description
1	901-02-010-7562	10-32 X 5/16" ROUND HD SCREW	42	424-02-368-0002	LOCK W/KEYS
2	424-02-031-0030	COVER	43	424-02-031-0041	COVER PLATE, NOTE E
3	424-02-112-0013	SPECIAL SCREW		424-02-031-0041	COVER PLATE, NOTE D
4	424-02-088-0005	STOP	44	901-02-010-0558	#08-32 X 1/4" ROUND HD SCREW
5	901-04-161-9252	SCREW	45	901-02-010-0567	06-32 X 1/4" ROUND HD SCREW
*	424-02-330-0006	INDEX COLUMN, CONST OF:	46	905-02-011-8145	3/8 X 1 1/2" GROOVE PIN
6	424-02-030-0004	COLUMN	47	424-02-330-0008	COLUMN ASSY, INCL:
7	424-02-071-0009	PIN	48	424-02-128-0002	KEY
8	928-01-251-8872	SPRING	49	901-03-010-0771	5/16-18 X 7/8" HEX SOC HD SCREW
9	400-06-371-0001	BUSHING W/PIN (NOTE A)	50	424-02-035-0001	RAISING NUT
10	905-01-010-2729	3/16" X 1/2" SPRING PIN	51	424-02-031-0044	REAR COVER
11	424-02-004-0014	BAR	52	902-04-010-1402	1/4-20 WING NUT
12	424-02-105-0002	SLEEVE	53	901-03-040-8016	5/16-18 X 3/4" BUTTON HD SCREW
13	905-01-010-2720	1/4" X 1" SPRING PIN	54	904-02-010-1703	5/16" LOCK WASHER
14	424-04-031-0017	COVER, NOTE E	55	901-02-010-0554	08-32 X 1/2" ROUND HD SCREW
	424-04-031-0009	COVER, NOTE D	56	424-02-088-0006	STOP
15	901-02-010-0558	#08-32 X 1/4" ROUND HD SCREW	57	901-01-060-0614	1/4-20 X 1 1/4" HEX HD SCREW
16	901-01-060-0648	3/8-16 X 1 1/4" HEX HD SCREW	58	904-02-020-1705	1/2" LOCK WASHER
17	904-02-020-1704	3/8" LOCK WASHER	59	901-03-010-0765	1/2-13 X 1 1/2" HEX SOC HD SCREW
18	424-02-089-0020	SUPPORT, NOTE E	60	424-02-108-0017	GUIDE ROD
	424-02-089-0016	SUPPORT, NOTE D	61	902-01-013-1859	5/16-18 HEX NUT
19	438-01-004-0030	CLAMP (2) FOR 33-890	62	424-02-108-0012	ROD
19A	438-01-004-0030	CLAMP (1) FOR 33-891, 892, 893)	63	424-02-132-0003	RIP SCALE
20	438-01-004-0092	CLAMP - DOUBLE (1) FOR 33-891, 892, 893	64	901-02-010-0558	#08-32 X 1/4" ROUND HD SCREW
21	901-03-010-3318	10-32 X 3/8" HEX SOC HD SCREW	65	424-02-055-0017	GUIDE, NOTE E
23	901-01-060-0622	1/4-20 X 2" HEX HD SCREW		424-02-055-0015	GUIDE, NOTE D
24	931-01-021-4099	KNOB, ALL EXCEPT 33-895X	66	424-02-331-0029	COVER, INCL., NOTE E
	424-02-138-0003	KNOB, 33-895X		424-02-331-0013	COVER, INCL., NOTE D
25	901-07-261-3250	STUD	67	910-01-071-0132	HEYCO BUSHING
26	424-02-107-0001	HUB	68	931-01-042-0455	KNOB, ALL EXCEPT 33-895X
27	424-02-027-0010	CLAMP		424-02-138-0006	KNOB, 33-895X
28	928-01-601-8873	SPRING	69	901-03-040-8016	5/16-18 X 3/4" BUTTON HD SCREW
31	438-01-004-0007	CORD CONNECTOR	70	904-02-010-1703	5/16" LOCK WASHER
32	961-01-010-7499	PLUG	71	424-02-752-0079	WARNING LABEL
33	901-01-101-9846	5/16-18 X 4 1/2" HEX HD SCREW	72	424-00-752-0002	WARNING LABEL
34	424-02-027-0010	CLAMP	73	424-02-631-0007	HARDWARE PACK , ALL EXCEPT 33-895X
35	904-07-011-8401	7/8" FIBER WASHER		424-02-631-0008	HARDWARE PACK, 33-895X
36	901-03-010-0762	5/16-18 X 5/8" HEX SOC HD SCREW			
37	904-01-010-1609	FLAT WASHER			
38	951-01-021-7019	POINTER			
39	438-01-011-0036	INSULATION			
40	438-01-017-0123	MANUAL SWITCH			
41	438-01-017-0085	LVC SWITCH			

* NOT SHOWN ASSEMBLED
 EMO=EARLY MODELS ONLY
 CMO=CURRENT MODELS
 IMO= INTERMEDIATE MODELS

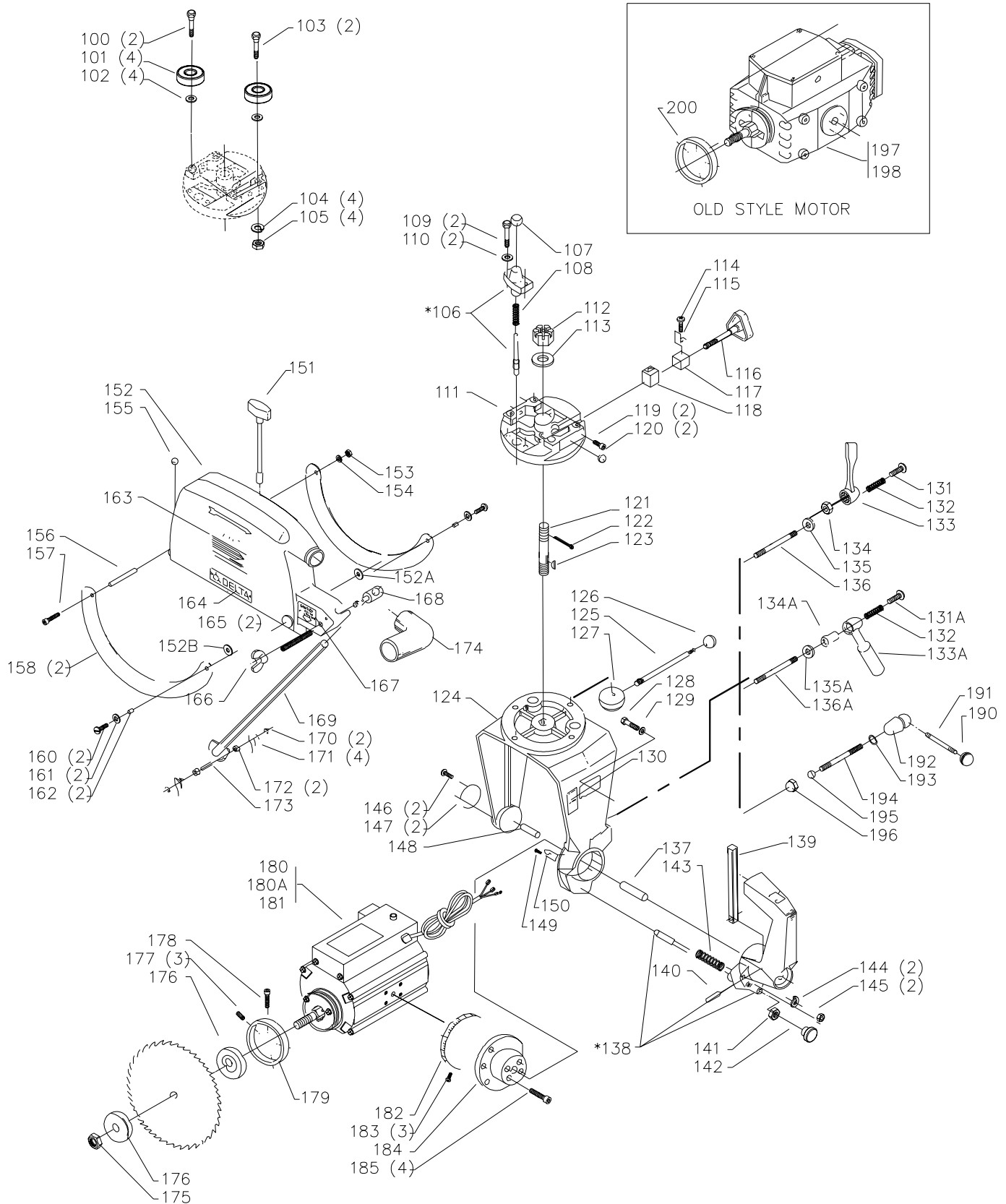
Service Note:

A - Bushing and pin are furnished (and must be replaced) as a matched set. A small tube of #680 Loctite is provided with the set to secure the bushing in the index column.

LOCTITE® is a registered trademark of the LOCTITE CORP., Newington, CT

D - S/N'S BEGINNING WITH 01H AND BELOW

E - S/N'S BEGINNING WITH 01I AND ABOVE



* TO MAINTAIN THE REQUIRED FIT, THE PLUNGER HOUSINGS ARE HONED AND FITTED WITH THE PLUNGER AND SUPPLIED AS AN ASSEMBLY.

REPLACEMENT PARTS

Ref.	No.	Part No.	Description	Ref.	No.	Part No.	Description
	100	424-02-111-0015	STUD		155	436-01-016-2001	BUMPER
	101	424-02-080-0002	BEARING		156	1087837	SPACER
	102	424-02-083-0001	SHIM		157	901-01-060-9596	1/4-20 X 3 1/4" HEX HD SCREW
	103	424-02-111-0016	ECCENTRIC STUD		158	424-02-054-0005	LEAF
	104	904-02-010-1703	5/16" LOCK WASHER		160	901-02-120-7504	1/4-20 X 5/8" TRUSS HD SCREW
	105	902-01-010-1206	5/16-24 HEX NUT		161	904-01-031-7712	FLAT WASHER
	106	424-02-388-0020	STOP ASSY, INCL.; NOTE E		162	424-02-104-0016	SPACER
		424-02-388-0019	STOP ASSY, INCL.; NOTE D		163	424-02-752-0083	WARNING LABEL, NOTE E
	107	931-01-021-4099	KNOB, ALL EXCEPT 33-895X		164	424-00-752-0001	WARNING LABEL, NOTE D
		424-02-138-0003	KNOB, 33-895X			424-12-754-0012	NAMEPLATE, NOTE E
	108	928-01-041-4123	SPRING			406-03-137-0004	NAMEPLATE, NOTE D
	109	901-01-060-0649	5/16-18 X 1" HEX HD SCREW			424-02-752-0087	NAMEPLATE, 33-895X ONLY
	110	904-01-013-1855	FLAT WASHER		165	424-02-752-0085	NAMEPLATE, CMO EXCEPT 33-895X
	111	424-02-057-0007	ROLLER HEAD		166	901-04-193-1297	5/16-18 X 1" HEX SOC SET SCREW
	112	902-01-161-7838	3/4-16 NUT		167	902-04-010-1404	3/8-16 WING NUT
	113	904-01-013-1826	WASHER		167	424-02-752-0084	PLATE
	114	901-02-010-0569	08-32 X 3/16" ROUND HD SCREW		168	424-02-111-0014	CLAMP
	115	951-01-021-7018	POINTER		169	424-02-408-0017	KICK BACK ROD ASSY, INCL:
	116	424-02-412-0011	CLAMP SCREW ASSY		170	904-15-062-0269	EXT RET RING
	117	424-02-027-0014	OUTER CLAMP		171	424-04-047-0002	FINGERS
	118	424-02-027-0011	INNER CLAMP		172	424-02-104-0014	SPACER
	119	901-04-150-0202	1/4-20 X 1/2" HEX SOC SET SCREW		173	424-02-071-0023	PIN
	120	424-03-016-0002	BUMPER		174	424-02-026-0001	DUST CHUTE
	121	424-02-111-0009	STUD		175	424-12-079-0007	ARBOR NUT
	122	905-05-040-2106	1/8" X 1 1/4" COTTER PIN		176	424-02-103-0001	FLANGE
	123	927-01-100-2606	HI-PRO KEY		177	901-04-150-0235	10-24 X 3/8" HEX SOC SET SCREW
	124	424-02-102-0010	YOKE (CMO NOTE B), NOTE E		178	901-04-153-1794	1/4-20 X 1" HEX SOC HD SCREW
		424-02-102-0009	YOKE (CMO NOTE B), NOTE D		179	424-02-001-0014	COLLAR (CMO)
	125	424-02-112-0016	STUD		180	424-02-131-0009	MOTOR - 2HP, 1 PH, 230V, NOTE C, INCL:
	126	931-01-011-4091	BALL HANDLE, ALL EXCEPT 33-895X	**	**	1345843	START CAPACITOR
		424-02-138-0005	BALL HANDLE, 33-895X	**	**	1345844	RUN CAPACITOR
	127	424-02-027-0004	CLAMP	**	**	1345845	START SWITCH MODULE
	128	901-01-060-3124	1/4-20 X 1 1/2" HEX HD SCREW	**	**	1345846	CENTRIFUGAL BRAKE ASSY, NOTE C
	129	904-01-010-1614	FLAT WASHER	**	**	424-02-039-0001	BRAKE DISC (SEE NOTE C)
	130	424-12-752-0049	WARNING LABEL, NOTE E	**	**	424-02-031-0040	OVERLOAD
		424-12-072-0021	WARNING LABEL, NOTE D	**	**	424-02-131-0010	BRAKE COVER
	131	406-03-112-0006	SPECIAL SCREW (CMO, NOTE B)	**	**	424-02-131-0010	MOTOR - 2HP, 1PH,230V,LVC, NOTE C, INCL
	131A	406-03-112-0003	SPECIAL SCREW (IMO NOTE B)	**	**	1345846	CENTRIFUGAL BRAKE ASSY, NOTE C
	132	406-03-122-0002	SPRING (I & CMO ONLY, NOTE B)	**	**	424-02-039-0001	BRAKE DISC (SEE NOTE C)
	133	406-03-033-0002	RATCHET HANDLE (CMO, NOTE B), ALL EXCEPT 33-895X	**	**	424-02-031-0040	BRAKE COVER
		424-02-033-0005	RATCHET HANDLE, 33-895X	**	**	424-02-131-0011	MOTOR,2HP,3PH,200-230/460V, LVC, NOTE C
	133A	406-03-033-0001	HANDLE (IMO NOTE B)	**	**	1345846	CENTRIFUGAL BRAKE ASSY, NOTE C
	134	902-01-203-1697	7/16-14 HEX NUT -LH (CMO, NOTE B)	**	**	424-02-039-0001	BRAKE DISC (SEE NOTE C)
	134A	424-02-027-0016	CLAMP (IMO NOTE B)	**	**	424-02-031-0040	BRAKE COVER
	135	904-01-031-2925	WASHER (CMO, NOTE B)	**	**	951-02-011-8295	BEVEL SCALE
	135A	904-10-031-2097	WASHER (IMO NOTE B)	**	**	901-06-450-2252	02 X 3/16" ROUND HD SCREW
	136	424-02-111-0018	STUD (CMO, NOTE B)	**	**	424-02-095-0008	FRONT TRUNNION, NOTE E
	136A	424-02-111-0017	STUD (IMO NOTE B)	**	**	424-02-095-0006	FRONT TRUNNION, NOTE D
	137	424-02-071-0022	FRONT TRUNNION PIN	**	**	901-03-010-0770	5/16-18 X 1 1/4" HEX SOC HD SCREW
*	424-02-355-0015	GUIDE ASSY, CONST OF:		**	**	931-01-021-4099	KNOB (EMO NOTE B)
138	424-02-355-0013	GUIDE ASSY, INCL.; ALL EXCEPT 33-895X		**	**	901-07-261-3250	STUD (EMO NOTE B)
		424-02-355-0024	GUIDE ASSY, INCL.; 33-895X	**	**	424-02-107-0002	HUB (EMO NOTE B)
139	424-02-004-0015	LEVER		**	**	904-03-063-1134	3/8" SPRING WASHER (EMO, NOTE B)
140	424-02-071-0012	PIN		**	**	424-02-111-0008	STUD (EMO NOTE B)
141	902-01-200-9847	SPECIAL NUT		**	**	424-02-017-0008	BUSHING (EMO NOTE B)
142	931-01-021-4099	KNOB, ALL EXCEPT 33-895X		**	**	902-10-010-2956	1/2-20 PAL NUT (EMO NOTE B)
	424-02-138-0003	KNOB, 33-895X		**	**	424-02-131-0005	MOTOR - 1 1/2HP,1 PH, 115/230V, INCL.; EMO
143	928-01-041-5310	SPRING		**	**	424-02-131-0009	MOTOR - 2HP,1 PH, 230V, INCL.; CMO
144	904-02-010-1703	5/16" LOCK WASHER		**	**	1345355	BRAKE COIL, ALL VOLT
145	901-03-010-0779	5/16-18 X 1 1/2" HEX SOC HD SCREW		**	**	1345356	BRAKE LINER 12" RAS
146	901-02-010-0558	#08-32 X 1/4" ROUND HD SCREW		**	**	1345357	BRAKE COVER 12" RAS
147	424-02-072-0016	TRUNION PLATE, NOTE E		**	**	438-01-015-0029	RELAY
	424-01-072-0002	TRUNION PLATE, NOTE D		**	**	438-01-017-0156	OVERLOAD
148	424-12-071-0002	PIN		**	**	438-01-029-0010	CAPACITOR
149	901-02-160-3729	08-32 X 1/4" PAN HD SCREW		**	**	424-02-131-0011	MOTOR - 1 1/2HP, 3 PH,230/460V
150	422-34-075-0002	POINTER		**	**	424-02-001-0011	COLLAR, EMERSON MTR (EMO)
151	424-02-327-0014	CLAMP ASSY, ALL EXCEPT 33-895X		*	*		NOT SHOWN ASSEMBLED
	424-02-327-0015	CLAMP ASSY, 33-895X		**	**		NOT SHOWN
151A	904-10-031-3810	FLATWASHER					EMO=EARLY MODELS ONLY
152	424-02-354-0026	BLADE GUARD ASSY, ALL EXCEPT 33-895X, I					CMO=CURRENT MODELS
	424-02-354-0027	BLADE GUARD ASSY, INCL.; 33-895X					IMO= INTERMEDIATE MODELS
152A	904-07-010-5571	FIBER WASHER					
152B	904-07-010-5571	FIBER WASHER					
153	902-01-120-1034	1/4-20 HEX NUT					
154	904-02-020-1702	1/4" LOCK WASHER					

Service Note:

B - Early model yoke must be used with early model clamp handle configuration (Ref. 190 thru 196).

Intermediate model yoke must be used with intermediate model clamp configuration (Ref. Nos. 131A thru 136A).

Current model yoke must be used with intermediate model clamp configuration (Ref. Nos. 131 thru 136).

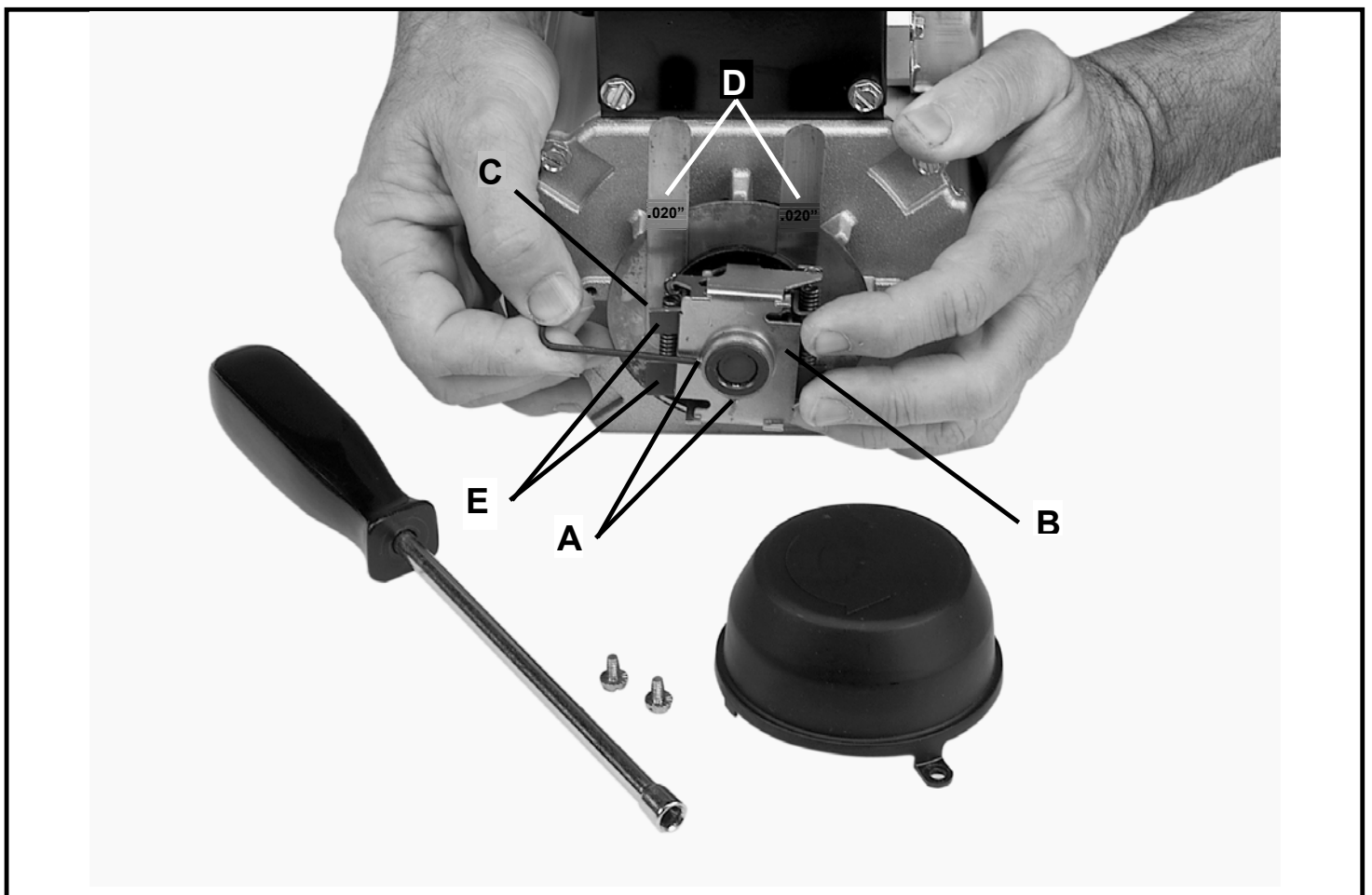
D - S/N'S BEGINNING WITH 01H AND BELOW

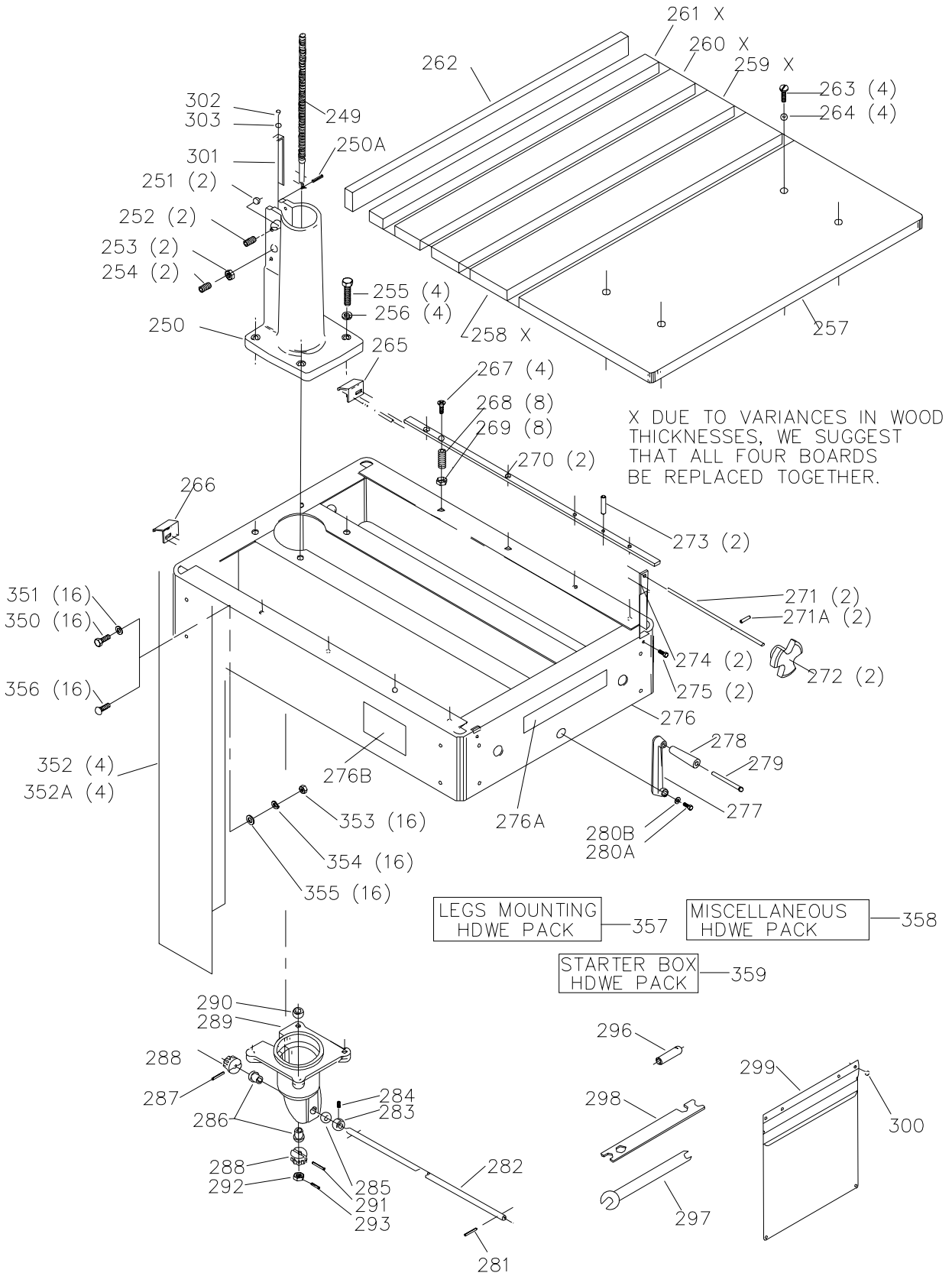
E - S/N'S BEGINNING WITH 01I AND ABOVE

SERVICE NOTE C:

The motor on this product is equipped with an external mechanical braking device. Should the brake require adjustment due to wear or removal for motor service, proceed as follows:

1. Disconnect machine from the power source.
2. Remove two screws securing plastic brake mechanism cover. Remove cover.
3. Using 5/64" hex wrench, loosen two (2) set screws (A) securing mechanical brake mechanism (B).
4. Slide brake mechanism off shaft. Inspect phenolic shoe. Replace brake mechanism if shoe is damaged or excessively worn.
5. Clean brake shoe and brake disc (C) to remove any dust and oil build up.
6. Place disc and brake mechanism onto shaft. Place two .020" shims (D) between disc and brake shoe. See photo below for proper shim placement.
7. Push brake mechanism toward disc until the flyweights (E) expand and firm resistance is felt. Carefully hold brake mechanism in this position while securely tightening the two setscrews loosened in Step 3 above.
8. Remove the two shims and replace the plastic cover taking care to center the brake disc in the shoulder around the plastic cover outer circumference.
9. Test run motor to insure brake is not dragging during operation.





REPLACEMENT PARTS

Ref.	No.	Part No.	Description	Ref.	No.	Part No.	Description
	249	424-02-112-0010	SCREW		282	424-02-108-0018	ROD
	250	424-02-305-0026	COLUMN BASE, INCL.; NOTE E		283	904-10-991-2051	COLLAR, INCL:
	250A	905-01-010-6721	1/4" X 7/8" SPRING PIN		284	901-04-150-0208	1/4-20 X 1/4" HEX SOC SET SCREW
	251	902-01-013-1859	5/16-18 HEX NUT		285	904-07-010-5567	1/2" FIBER WASHER
	252	901-02-183-1280	5/16-18 X 2" HEX HD SCREW		286	424-02-017-0003	BUSHING
	253	902-01-020-5435	5/16-18 JAM NUT		287	905-01-010-6714	5/32 X 1 1/4" SPRING PIN
	254	901-04-150-0292	5/16-18 X 1 1/4" HEX SOC SET SCREW		288	424-02-051-0008	GEAR
	255	901-01-060-0616	1/2-13 X 1 1/2" HEX HD SCREW		289	424-02-013-0005	GEAR BOX
	256	904-02-020-1705	1/2" LOCK WASHER		290	920-52-010-5323	THRUST BEARING
	**	424-02-311-0004	BOARD SET, CONST OF:		291	905-01-010-6714	5/32 X 1 1/4" SPRING PIN
	257	424-02-011-0018	FRONT BOARD		292	902-01-161-7837	3/8-16 HEX NUT
	258	424-02-011-0007	BOARD		293	905-01-010-2717	3/32 X 1/2" SPRING PIN
	259	424-02-011-0008	BOARD		296	424-02-012-0006	WRENCH
	260	424-02-011-0009	BOARD		297	955-01-040-1485	WRENCH
	261	424-02-011-0010	BOARD		298	424-12-101-0001	WRENCH
	262	424-02-011-0011	FENCE		299	400-06-603-0003	ENVELOPE
	263	901-02-010-0536	1/4-20 X 1 3/4" ROUND HD SCREW		300	400-06-079-0001	RETAINER
	264	904-01-010-1614	FLAT WASHER		301	424-12-052-0001	GIB
	265	424-01-327-0005	CLAMP PAD - RH		302	901-03-010-0224	#10-32 X 1/2" HEX SOC HD SCREW
	266	424-01-327-0006	CLAMP PAD - LH		303	904-01-010-1610	FLAT WASHER
	267	901-03-030-8013	1/4-20 X 3/4" FLAT HD SCREW		350	901-01-060-0607	5/16-18 X 3/4" HEX HD SCREW (EMO)
	268	424-01-112-0001	LEVELING SCREW		351	904-01-013-1855	FLAT WASHER (EMO)
	269	902-10-010-2956	1/2-20 PAL NUT		352	424-02-366-0008	LEG ASSY, 30" LONG (EMO)
	270	424-02-004-0013	BAR		352A	424-12-366-0002	LEG ASSY, 32-1/2" LONG
	271	424-02-408-0009	ROD ASSY, INCL:		353	902-01-013-1859	5/16-18 HEX NUT, NOTE E
	271A	905-01-010-2717	3/32 X 1/2" SPRING PIN			902-01-010-1300	5/16-18 HEX NUT, NOTE D
	272	424-02-138-0002	KNOB, ALL EXCEPT 33-895X		354	904-03-033-1867	5/16" EXT TOOTH WASHER, NOTE E
		424-02-138-0004	KNOB, 33-895X			904-03-030-1656	5/16" EXT TOOTH WASHER, NOTE D
	273	905-01-010-2720	1/4" X 1" SPRING PIN		355	904-01-013-1855	FLAT WASHER (CMO), NOTE E
	274	424-02-089-0009	SUPPORT			904-01-010-1620	FLAT WASHER (CMO), NOTE D
	275	901-01-060-0611	1/4-20 X 1/2" HEX HD SCREW		356	901-11-023-1476	5/16-18 X 5/8" CARRIAGE HD SCREW (CMO)
	276	424-02-305-0027	BASE, CONST. OF, NOTE E		357	424-12-725-0004	LEGS MTG. HARDWARE PACK
		424-02-305-0023	BASE, NOTE D		358	424-02-628-0013	MISCELLANEOUS HARDWARE PACK
	276A	424-02-752-0082	NAMEPLATE, ALL EXCEPT 33-895X, NOTE E		359	424-02-628-0009	STARTER BOX HARDWARE PACK
	n	424-02-752-0086	NAMEPLATE, 33-895X		**	424-02-014-0025	BRACKET
	276B	422-04-752-0185	LABEL, NOTE E		**	901-01-060-0611	1/4-20 X 1/2" HEX HD SCREW
	277	424-02-333-0008	CRANK ASSY, INCL.; ALL EXCEPT 33-895X		**	901-01-060-0626	1/4-20 X 3/4" HEX HD SCREW
		424-02-333-0010	CRANK ASSY, INCL.; 33-895X		**	902-01-120-1034	1/4-20 HEX NUT
	278	1086395	HANDLE, ALL EXCEPT 33-895X		**	904-01-010-1614	1/4" FLAT WASHER
		422-02-060-0005	HANDLE, 33-895X		**	904-02-020-1702	1/4" LOCK WASHER
	279	422-04-071-5002	PIN, ALL EXCEPT 33-895X		**	52-704	LVC STARTER BOX, 33-891, 33-892, 33-894
		422-04-071-0011	PIN, 33-895X		**		NOT SHOWN
	280A	901-01-060-0611	1/4-20 X 1/2" HEX HD SCREW				
	280B	904-01-010-1614	FLAT WASHER				
	281	905-04-091-7956	SHEAR PIN				

Service Note:

NOTE D: S/N'S BEGINNING WITH 01H AND BELOW

NOTE E: S/N'S BEGINNING WITH 01I AND ABOVE

STANDARD SAFETY EQUIPMENT

In order to promote tool safety, Delta Machinery strictly enforces the policy of repairing or replacing any damaged or missing standard safety equipment on machines presented to Delta Authorized Service Centers for service/repairs. Any product that is presented to a Delta Authorized Service Centers for repairs which contains missing or damaged standard safety equipment will have that equipment repaired or replaced and the customer will be charged for any such service/repairs. Customers can avoid such charges only if the missing safety component is supplied to the service center at the time of repair.

This parts list is provided to aid in obtaining service parts. Copies of the instruction and maintenance literature can be obtained through the Delta Technical Publications Department or through your service outlet.